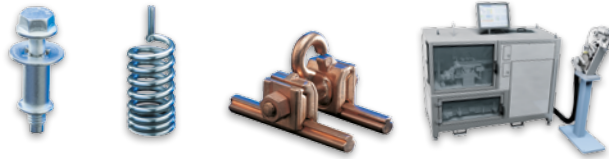




RIBE® – Your Partner for

INNOVATION



RIBE®



History

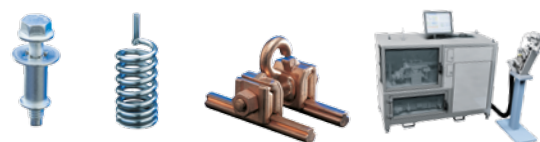
- 1911 RIBE®-Group spring factory established in Schwabach
- 1915 Manufacturing of cold formed special screws begins
- 1945 Start of production for low and high voltage fittings
- 1998 Production sites built in Slovakia & Global Fastener Alliance (GFA) established
- 2002 RIFAST Systems LLC, USA established
- 2003 RIBE® Joining Technologies Shanghai/Jiading (China) established
- 2010 RIBE® Power Malaysia SDN. BHD. established
- 2011 A century of RIBE® – a century of innovations
- 2013 RIBE® Anlagentechnik GmbH established

Consistency – the Basis of Success

The Managing Partners of the RIBE®-Group, Frank Bergner and Thomas Dann, manage the company in its third and fourth generation.

For over a century

WE CONNECT THE WORLD



This has been at the heart of our work for more than 100 years and is part of our entrepreneurial spirit. Richard Bergner Holding GmbH & Co. KG, the experts for excellent connections – with products and solutions for the automotive industry, medical engineering, mechanical engineering, for power utilities and public transport companies – is one of the world's leading developers and manufacturers of mechanical fastening elements, technical springs and electrical fittings.

RIBE® has around 1,300 employees at sites in Germany, the United States, Eastern Europe and Asia. Our coverage may be global, but we have still maintained our character as a family-operated enterprise: We connect the world while keeping close ties to our home sites of Schwabach and Radebeul.



RIBE® Know-How

EXPERT PARTNER FOR ALL YOUR CONNECTION NEEDS

Providing the best individual solutions connects us to our customers. We support them through competent application engineering and development, superior workmanship, outstanding products and comprehensive services – across the globe and at all project stages. We are technology leaders and solution providers who find the best solution for every requirement. We know exactly what we do best: develop, design and produce fastening elements, technical springs and electrical fittings. How do we know? We rely on over 100 years of experience, utilizing our wide range of technology and a high level of in-house state of the art manufacturing equipment.

Core Technologies of the RIBE®-Group

- Cold forming
- Rolling
- Winding and coiling technology
- Punching and bending technology
- Steel and aluminum forging
- Heat treatment of steel, aluminum and other non-ferrous metals
- Customized surface coatings
- Mechanical CNC machining
- Semi-automated and automated component assembly
- Automated 100% sorting



RIBE® Responsibility

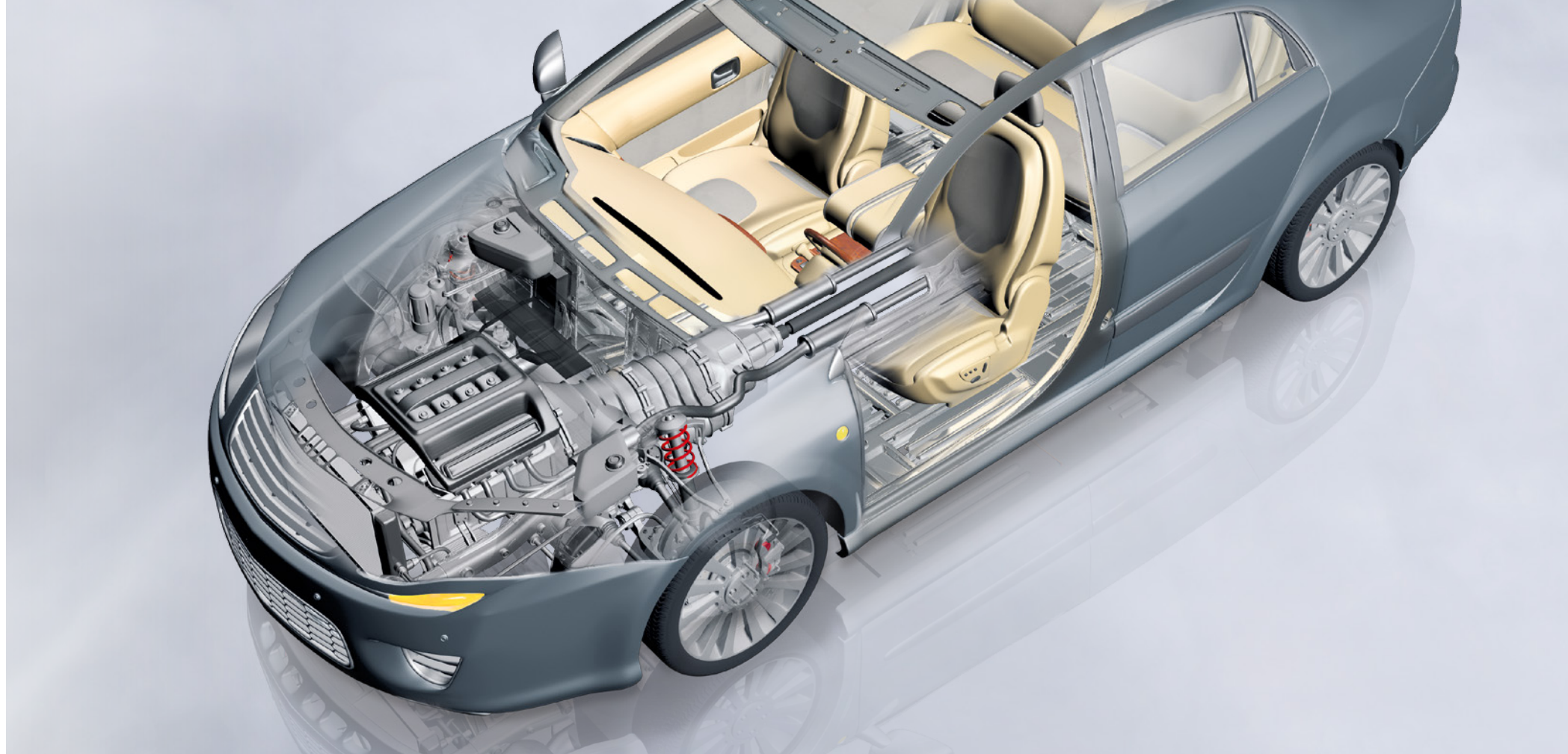
SUSTAINABLE DEVELOPMENT – FOR OUR FUTURE

We are a future-oriented family enterprise with a special responsibility. Sustainability is an integral part of our business strategy, so we are convinced that we can only be successful as entrepreneurs in the long run, if we bring economic growth in line with ecological and social responsibility. We want to set standards – for our customers, employees, business partners and for our future – from energy consumption in production to our social commitment, and from the promotion and development of our employees to the greenhouse gas emissions of our product portfolio.

◀ Sustainability –

A key factor in RIBE®'s success – based on four pillars

- Environment
- Employees
- Development & products
- Society

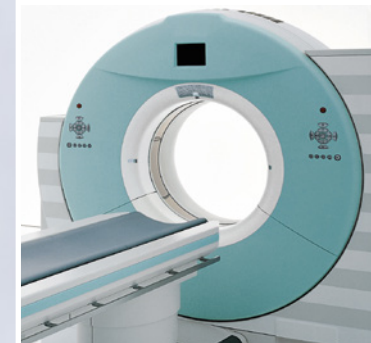


RIBE® Fastening Systems

YOUR DEVELOPMENT PARTNER FOR FASTENER INNOVATION



RIBE® Fastening Systems combine our innovative solutions with maximum quality and technical expertise. Our focus is always on our customers. We work closely with our customers to design high quality connections for demanding applications, aligned with your company's innovative strategies. Our products and solutions offer you the total range of future-oriented fastening systems, because we develop and manufacture special screws and rivets, precision cold formed parts and component assemblies that set standards worldwide. Examples include RIBE ALUFORM® aluminum screws, RIFIXX® integrated screw and sleeve assemblies, and RIFAST® complete clinch fastener and installation equipment solutions for the sheet metal industry.



◀ Fastening Systems Production Range

Special Screws – Rivets – Cold Formed Parts

- Production wire diameter range from 1.8 to 20mm
- Cold forming of special steel alloys and non-ferrous metals for the production of extremely high strength (up to 1500 MPa thread rolled at the end), low temperature, high temperature, lightweight construction and non-corrosive products

Complex Secondary Operations

- Machining
- Heat treatment
- Surface treatment: Phosphating, plating and alternative corrosion protection coatings

RIBE® Joining Technology

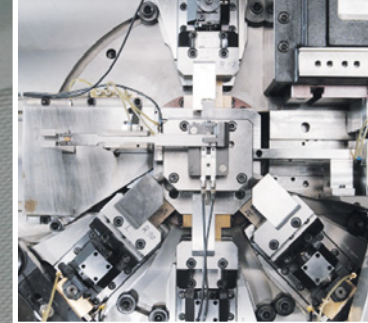
- Processing equipment for automated joining of fastening elements

RIBE® System Components

- Development and assembly of integrated components ready to be installed

◀ RIBE® Quality

Certification according to ISO 9001, ISO/TS 16949, EMAS, OHRIS



◀ **Technical Springs Production Range**

- Compression springs
- Tension springs
- Torsion springs
- Flat wire springs
- Preformed wires
- Sleeves
- Punched and bent parts

Materials

- Untempered, tempered & stainless materials
- Maximum strength spring materials
- Copper alloys
- Aluminum alloys

◀ **Technical Springs Services**

- Well-founded, detailed calculation & design
- Springs that reflect the latest advances in manufacturing technology and optimized functionality
- Individual, application-based feasibility analyses for the components
- Fast implementation of solutions
- Excellent, fast and flexible production prototypes for initial testing and development

◀ **RIBE® Quality**

Certification according to ISO 9001, ISO/TS 16949, EMAS, OHRIS

RIBE® Technical Springs

EXCITING SOLUTIONS FOR YOUR SPRING REQUIREMENTS



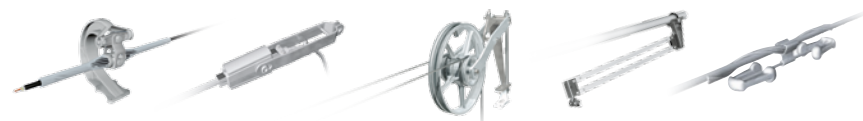
RIBE® also specializes in solutions for compression, tension, torsion and flat wire springs, bent wire parts, sleeves and punched parts.

We are one of the leading suppliers to renowned manufacturers from the automotive, automotive supply, mechanical engineering and medical engineering sectors. In addition to our experience in the technical spring market segment, we do not offer just products, but solutions that reflect the latest advances in manufacturing technology. We offer full technical support and engineering advice throughout every stage of development utilizing precise calculations and innovative designs. Moreover, we leverage synergies within the RIBE®-Group to produce and build even the most complex components and assemblies.



RIBE® Electrical Fittings

POWERLINE ACCESSORIES FOR TOMORROW'S ENERGY INFRASTRUCTURE



The infrastructure for the supply of electric power, data transfer and rail traffic has been our core business for decades. With investments in the future and new developments, we continue to expand our strategic customer partnerships in the global marketplace. After all, our number one priority is reliable network operation. We offer a portfolio of proven and tested electrical fittings from medium to high voltage. RIBE® Electrical Fittings speak for themselves by their reliability; intelligent design, and cost effective trusted "MADE IN GERMANY" quality. We are a pioneer in the field and offer our customers more than simple, stand alone products, we offer solutions and innovation. We support our partners globally in future projects by offering engineering studies and comprehensive training programs. We develop individual product solutions and find answers to tomorrow's requirements.

Electrical Fittings Production Range

Fittings for

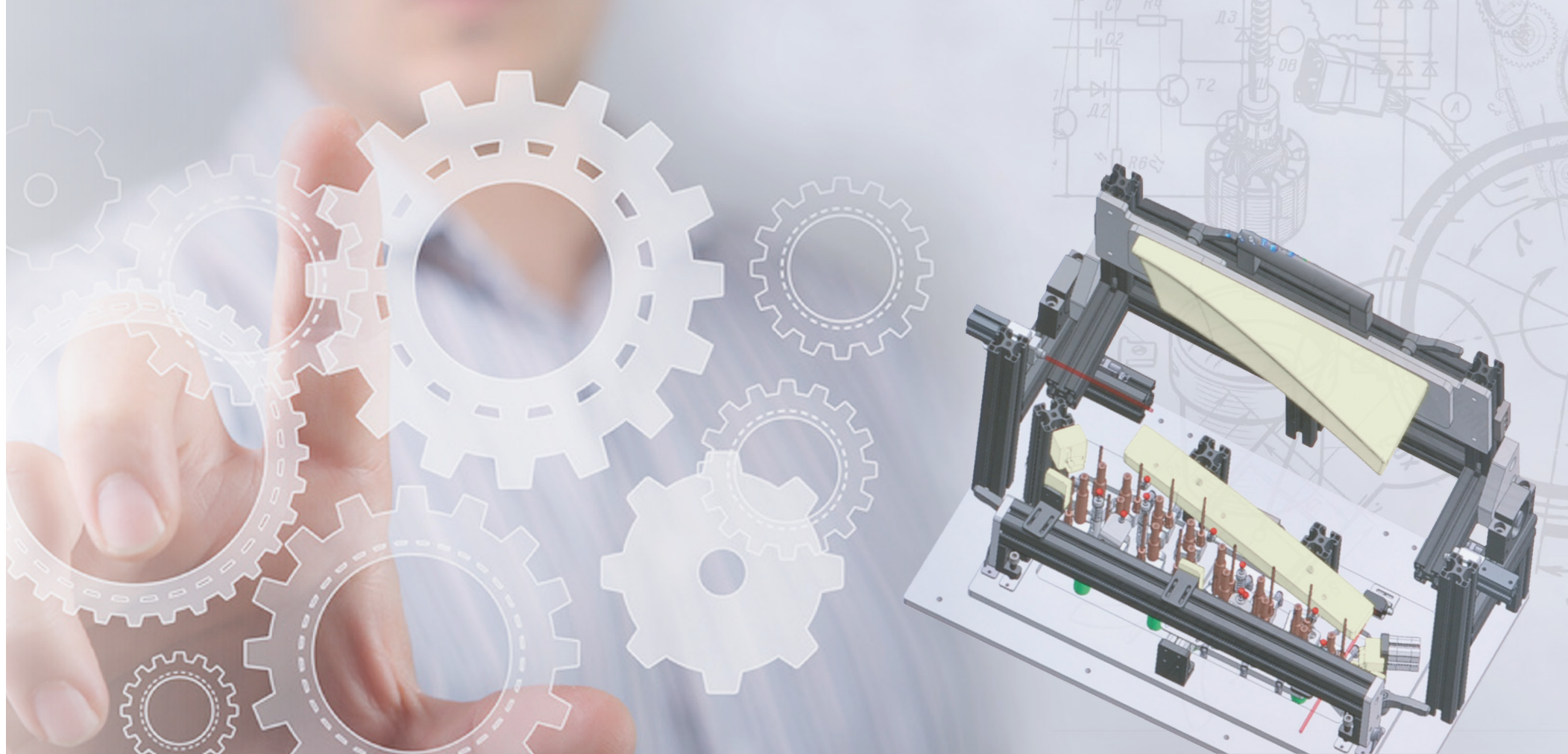
- Overhead lines
- Fiber optic overhead cables
- Catenary wires

Electrical Fittings Services

- Technical calculations
- Mechanical and electric tests at our own laboratory
- Vibration studies
- Expert opinions
- Training programs

RIBE® Quality

Certification according to ISO 9001, EMAS, OHRIS



◀ **Systems Engineering Production Range**

Development, Design and Production of

- Automated fastener feeding systems
- Conveyor systems
- Mounting devices
- Processing devices
- Customized special equipment

◀ **Systems Engineering Services**

- System maintenance
- Trouble-shooting
- Service and Spare parts
- Retrofitting of systems

◀ **RIBE® Quality**

Certification according to ISO 9001, EMAS, OHRIS

RIBE® Automated Equipment Technology

INNOVATIVE SOLUTIONS FOR YOUR MANUFACTURING ENVIRONMENT



Are you interested in making your production process more economic and considering special systems, intelligent mounting systems and automated feeder units with integrated special features? Then you can count on RIBE®. We have many years of experience and comprehensive expertise in developing and designing these systems. We always consider the maximum efficiency of your process flow. And you – our customer – are always at the center of our actions right from the beginning. It is our goal to find the best way to optimize your production processes aligned with your requirements. Our project management team designs your special system in close cooperation with you – and, after completion, our service team is always at your disposal with quick and reliable support.

WE CONNECT THE WORLD

RIBE[®]

RICHARD BERGNER HOLDING GMBH & CO. KG

Bahnhofstr. 8-16 · 91126 Schwabach · Germany
Phone: +49 (0) 91 22 / 87-0 · Fax: +49 (0) 91 22 / 87-15 03
E-mail: info@ribe.de · www.ribe.de